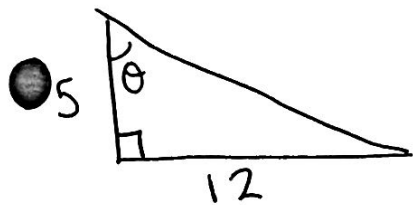


Practice Quiz - Right Triangle Trig

1)



$$\sin \theta =$$

$$\cos \theta =$$

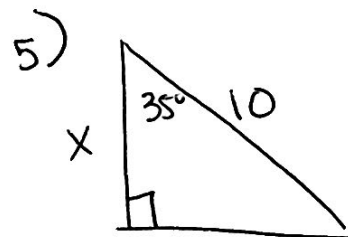
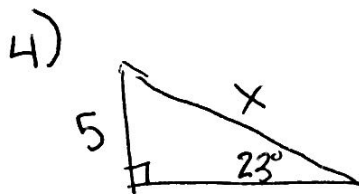
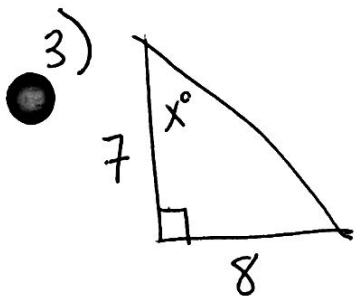
$$\tan \theta =$$

$$\csc \theta =$$

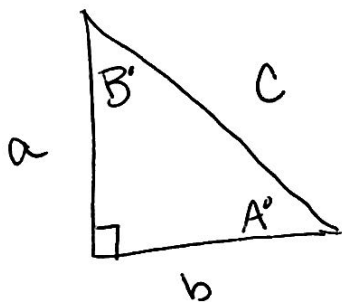
$$\sec \theta =$$

$$\cot \theta =$$

- 2) There is a rock on the ground 5 meters from a tree. The angle of elevation from the rock to the top of the tree is 32° . Find the height of the tree.



- 6) Solve the triangle if $\sin A = \frac{9}{15}$

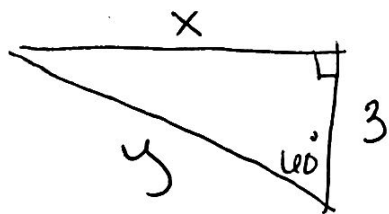


- 7) A boat in the water ~~is~~ 250 ft away from a hill sees a castle on top of the hill. The angle of elevation to the top of the hill is 15° and the angle of elevation to the top of the castle is 23° . What is the height of the castle?

- 8) Find $\tan \theta$ and $\cos \theta$ if $\sin \theta = \frac{4}{7}$. Leave your answers in radical form if necessary.

- 9) A police department's longest ladder is 90 ft long. Safety regulations only allow it to be used for rescues up to 80 ft from the ground. What is the maximum safe angle of elevation for the rescue ladder?

10)



11)

